

# the exitgallery

The Exit Gallery is located in the Strand Union Building, Room 212. The gallery hours are from 9-5 Monday-Friday.




ASMSU Arts Newsletter – every two weeks!

## UPCOMING EVENTS

- 09.06 – 09.16**    **EMBRACE**  
**Francesco Gillia**  
**09.07**    Reception  
5:00 pm in the Exit Gallery
- 09.19 – 09.13**    **STUDY ABROAD**  
**PHOTOGRAPHY EXHIBITION**  
**09.21**    Reception 5:00pm in the  
Exit Gallery
- 10.3 – 10.14**    **THE REAL IS REAL**  
**Nathan Toning**  
**10.05**    Reception 5:00pm in the  
Exit Gallery
- 10.17 – 11.04**    **CONSPICIO SPATIUM**  
**Chris Holton**  
**10.19**    Reception 5:00pm in the  
Exit Gallery

*If you know of an art event on campus that you would like us to include let us know!*

*Scroll down to find out more about Francesco Gillia's exhibition*



Francesco Gillia  
**EMBRACE**  
Exit Gallery September 6-16  
Reception Wednesday, September 7th at 5:00pm

The Exit Gallery is located in the Strand Union Building 212, Montana State University  
ASMSU Arts and Exhibits, 406.994.1828, exhibits@montana.edu

# EMBRACE

## An exhibition of work by MSU graduate student Francesco Gillia

Art is much like writing, but an artist can speak volumes in only a few inches of paint and canvas. He can paint what is difficult to comprehend or even what is difficult to look at, if he feels. One might have a very conflicting experience standing in front of the colossal nudes by MSU graduate student Francesco Gillia. This artist's work is stunningly beautiful but the women that he paints have been separated from their most defining features, their faces, arms and legs, and are distilled to a view that focuses directly on their most feminine parts. Not only that, but they are simply massive.

Francesco is Italian and anyone who talks to him for more than ten seconds will have figured that out. His paintings certainly resonate with the great classical Italian statues. One of his models, Tamara Christians, said that Gillia's paintings "are massive displays of femininity, each one coyly revealing something about the model." She goes on to talk about the "formula" that develops each work: "belly button landmark, vaginas eye level, hung such that feet, if the giant headless women had them, would stand flat on the floor." There is much mystery to the women but what they present to the viewer is a beautiful truth about the female body and all its imperfections.

The exhibition "Embrace" by Francesco Gillia will be in the ASMSU Exit Gallery **September 6-16** with an opening reception on **Wednesday, September 7<sup>th</sup> at 5:00 pm**. The Exit Gallery is located in Strand Union Building room 212, Montana State University and hours are Monday-Friday, 9am-5pm. For more info please call 406.994.1828 or email [exhibits@montana.edu](mailto:exhibits@montana.edu).



## Francesco Gillia

### Biography

Francesco Gillia was born in Monte Porzio Catone in province of Rome, Italy. He studied painting at the Accademia di Belle Arti di Roma. He moved to Hermosa Beach, California after graduation, working as product designer for Powerline6 a strategy, branding and design company.

Three years later he and his brother Marco started Bottega Montana. They designed and manufactured pieces for: Paul Smith, Obey Giant, DWR, Tretorn, the Showtime House 2010 to decorate the Dexter room.

Bottega Montana's furniture line uses a patent pending joint system and has been featured along with their high-end longboard designs in The New York Times, Los Angeles Times, GQ Italy, Dwell, Wallpaper, Outside, Conde' Nast Traveller, El Mundo, Food & Wine and many others. Some of its' clients include Don Cheadle, Lamar Odom and Khloe Kardashian.



## Upheaval: A Revolution of the Arts

We're looking for committee members!

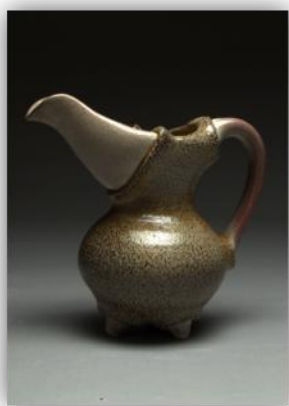
ARE YOU A MOTIVATED INDIVIDUAL WITH A LOVE FOR THE ARTS? VOLUNTEER AS A MEMBER OF THE UPHEAVAL COMMITTEE. EVERY YEAR WE ORGANIZE A HIGH VOLUME, HIGH IMPACT, THREE DAY STUDENT ART SALE CALLED "UPHEAVAL: A REVOLUTION

OF THE ARTS." IT WILL TAKE PLACE NOVEMBER 27-30 THIS YEAR AND WE NEED INVOLVEMENT FROM YOU! GETTING INVOLVED WITH THE COMMITTEE IS A GREAT WAY TO GAIN LEADERSHIP AND EVENT PLANNING EXPERIENCE. IT IS A FANTASTIC RESUME BUILDER AND IS VERY

REWARDING. WE ARE ESPECIALLY LOOKING FOR FRESHMEN AND SOPHOMORES IN THE ART PROGRAM BUT IT IS OPEN TO ANYONE. TO SIGN UP OR FOR MORE INFORMATION EMAIL ASMSU ARTS & EXHIBITS:

[asmsuexhibits@montana.edu](mailto:asmsuexhibits@montana.edu)

*The first Upheaval meeting will take place around mid-September. Please let us know as soon as you can if you are interested.*



Matthew Piedalue



Krista Busacker

## about the **exit** gallery...

A small space with big ideas...the Exit Gallery is a student organized student funded art gallery operated by ASMSU (Associated Students of Montana State University). The gallery hosts about seven exhibits per semester as well as other arts events. Receptions are on Wednesdays and are free...a great time to meet new people who love the arts, snack on awesome food and actually have intelligent conversation!

The Exit Gallery educates, informs, and encourages creativity! It is an outlet for student artists, alumni, and other up and coming talents! So come check out what your peers have been up to....wait, did you even know we have an amazing arts community on campus? Well it's time to find out!